



(2023

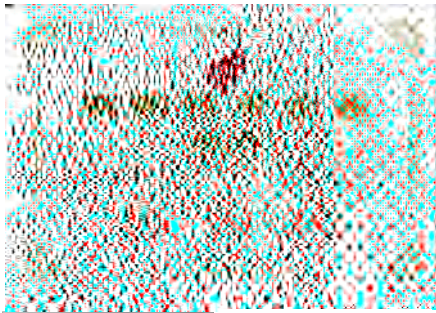
Product Catalogue

%

“ ”

“

”



“ ”



ISO -
ISO OHSAS

已申请 / 授权专利 50 多项



contents

第一部分 拉曼光谱仪

Raman

RMS

Spider +

EVA

Portman

IRS

nm

第三部分 光纤光谱仪

Spectrometer

XS

HS

HS

MS

Area

TEC

DQPro

MS

NIRPro

第二部分 光谱系统

Spectral systems

LIFS

HRS

OFS

FL

第四部分 激光器 探头 光纤

Probes and Fiber Lasers

RPB

RPB

FPB

OI×

QR

第五部分 光源

Light Sources

HL -Mini

DH

HL -ADJ

HL -P

DH -Mini

CAL-Hg

LED -OH LED

第六部分 采样附件

Accessories

PRB-D -IS

LC- -INT

SH-RAM-ADJ

SH- C

SH-L-EN

GER-Tube

CUV- - WAY

VOA- -SMA

SH-RAM-D

SA-Stage-RT

COL

IS

RMS2000微型共焦拉曼光谱仪

RMS

nm

Linux Windows

Android

/

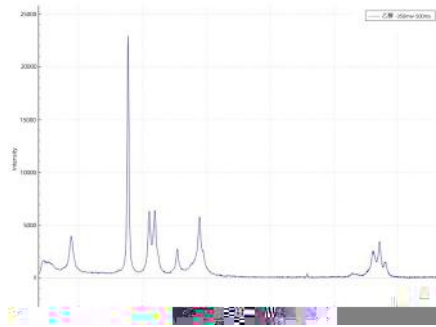
/



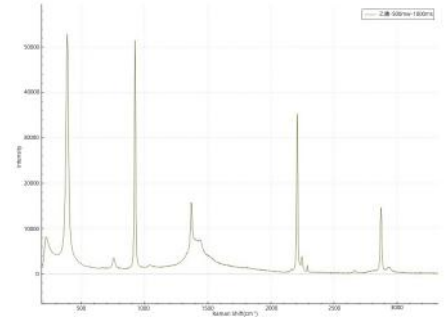
Parameter	Value



mW ms

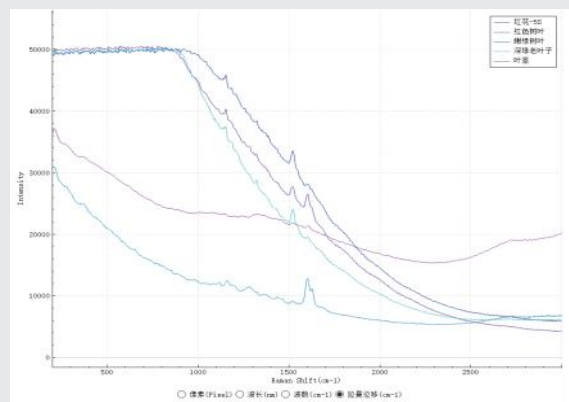
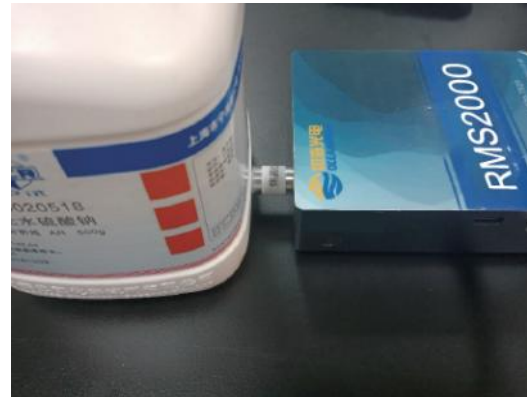
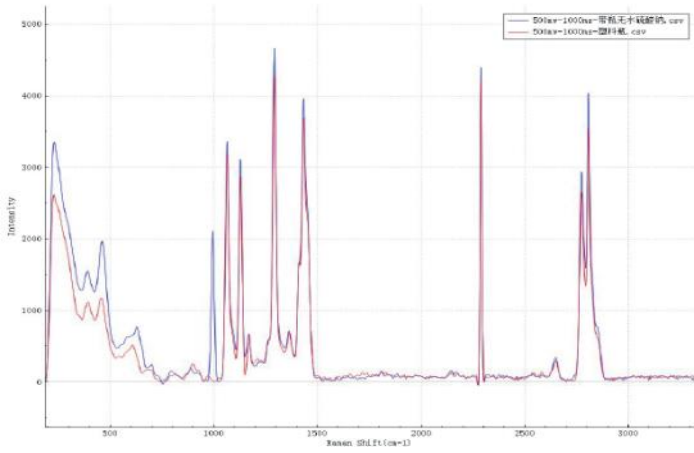


mW ms



穿透性检测验证

mW ms



Spider2000+便携式二维拉曼成像光谱仪

Spider +
RMS

mapping Spider +
Spider +

CCD

. %
cm⁻¹ @ μm
mapping

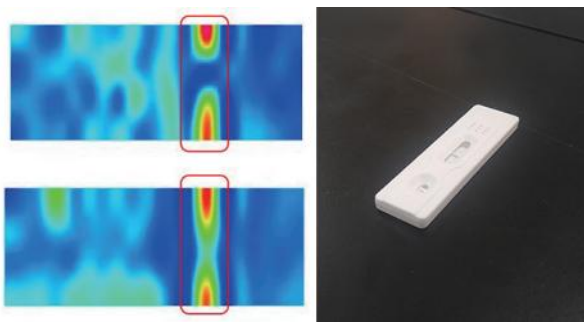
应用领域

-
-
-
-
-
-
-

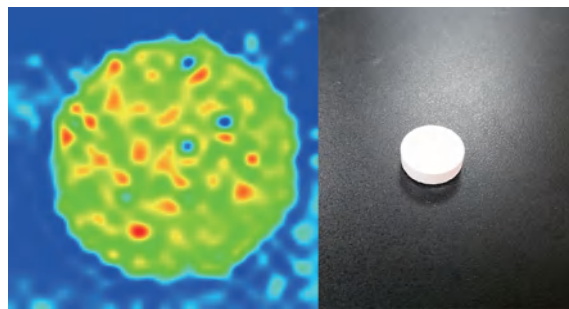
	Spider +
	* * mm
	kg
	× mm
	μm
	. mm
	mm/s
	- cm ⁻¹
	~ cm ⁻¹ @ μm
	± . nm . nm
	- mW
	× × × ×
	USB
	-
	- %

Mapping

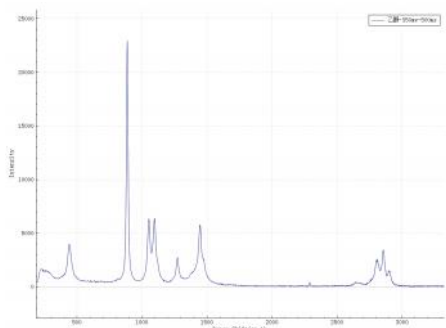
. mm× mm
×
: mW ms



mm× mm
×
: mW ms



mW ms



mW ms



mW ms



EVA6000手持式拉曼光谱仪

EVA

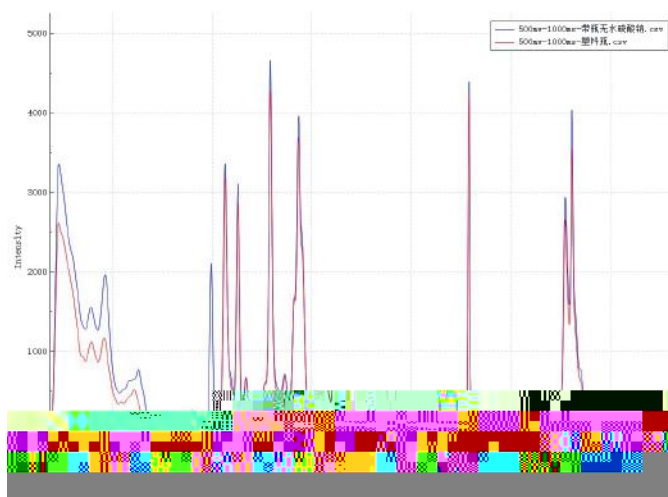
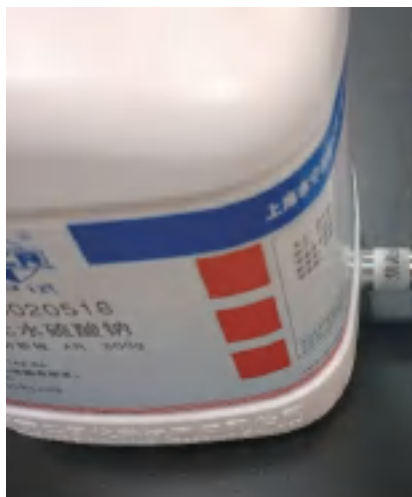


- mw,

WIFI GPS

穿透性检测验证

mW ms





	EVA
	× × mm
	g
	Type-C
	- cm ⁻¹
	cm ⁻¹ @ μm
	± . nm . nm
	, . hrs
	V/ A
	- mW
	ms- s
	. mm
	IP .
	.
	WiFi/ /GPS/NFC
	-
	- %

Portman系列便携式制冷型拉曼光谱仪

Portman

- °C
IIIB

SERS



Portman



nm nm nm nm

. cm⁻¹

应用领域

-
-
-
-
-
-
-
-
-
- SERS



							CCD
Portman	PR -T	nm	mW	-	cm ⁻¹	~ cm ⁻¹	-
	PR -T	nm	mW	-	cm ⁻¹	~ cm ⁻¹	-
	PR -D	nm	mW	-	cm ⁻¹	~ cm ⁻¹	-
	PR -D	nm	mW	-	cm ⁻¹	~ cm ⁻¹	-
	PR -D	nm	mW	-	cm ⁻¹	~ cm ⁻¹	-
	PR -D	nm	mW	-	cm ⁻¹	~ . cm ⁻¹	-
	PR -D	nm	mW	-	cm ⁻¹	~ cm ⁻¹	-

μm

μm

μm

JJF -

	Portman
	× × mm
	. kg
	cm ²
	cm ²
	ms- min
	* pixels(
	- °C
	Class IIIB Laser CFR
	. nm
	c± . nm
	FC/PC
	SMA
	USB
	V A
	-
	- %

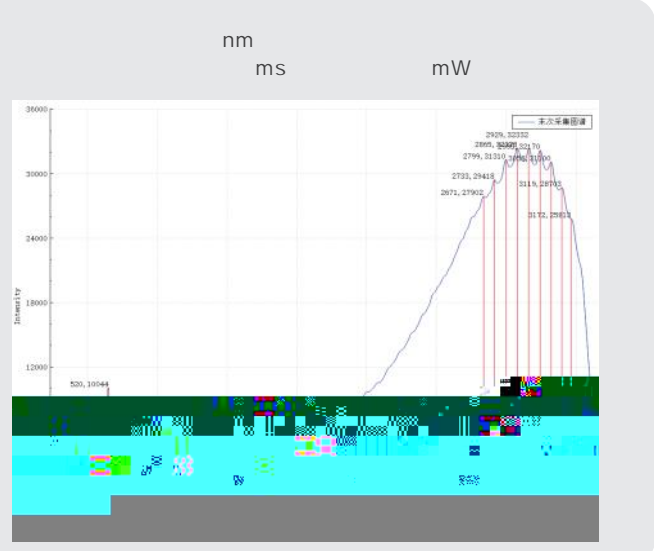
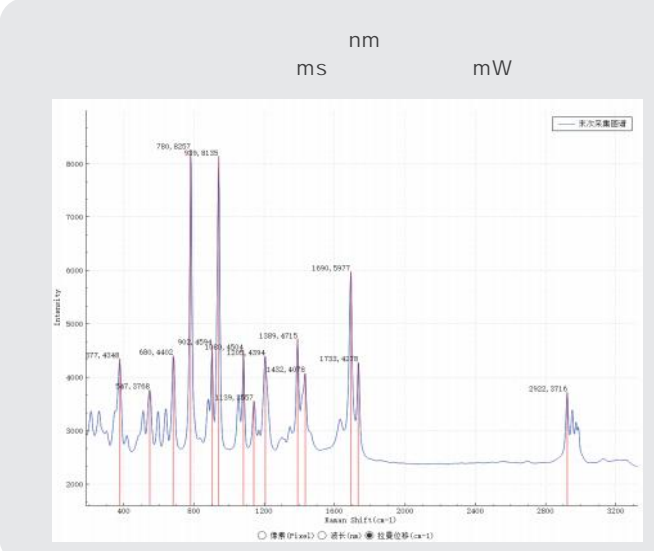
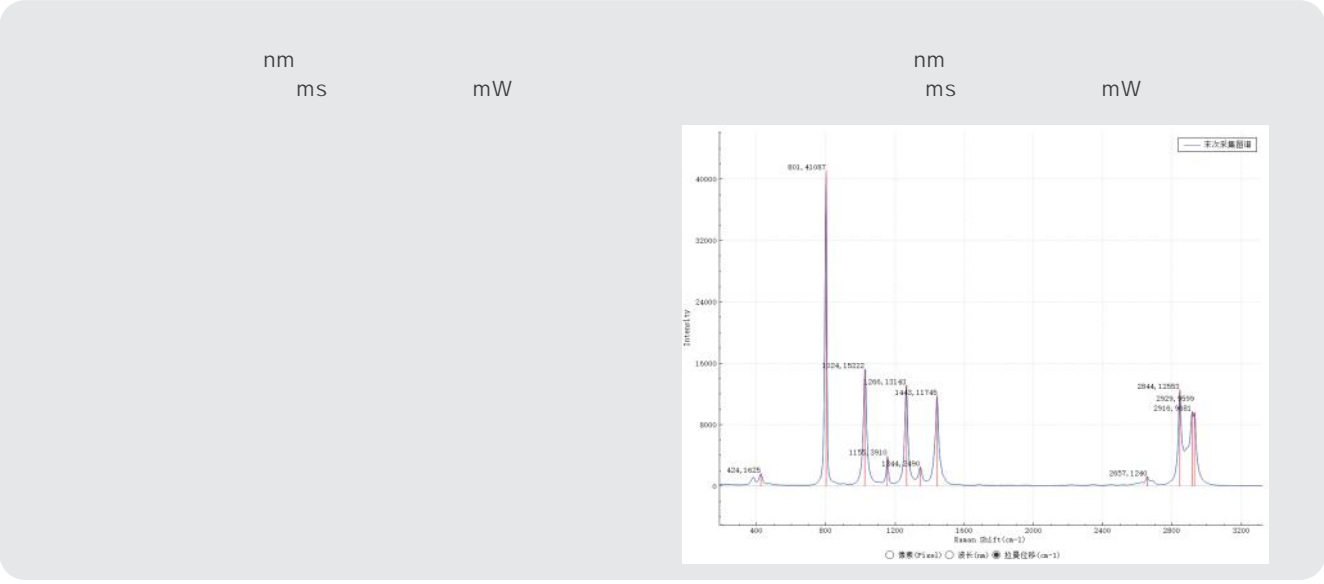
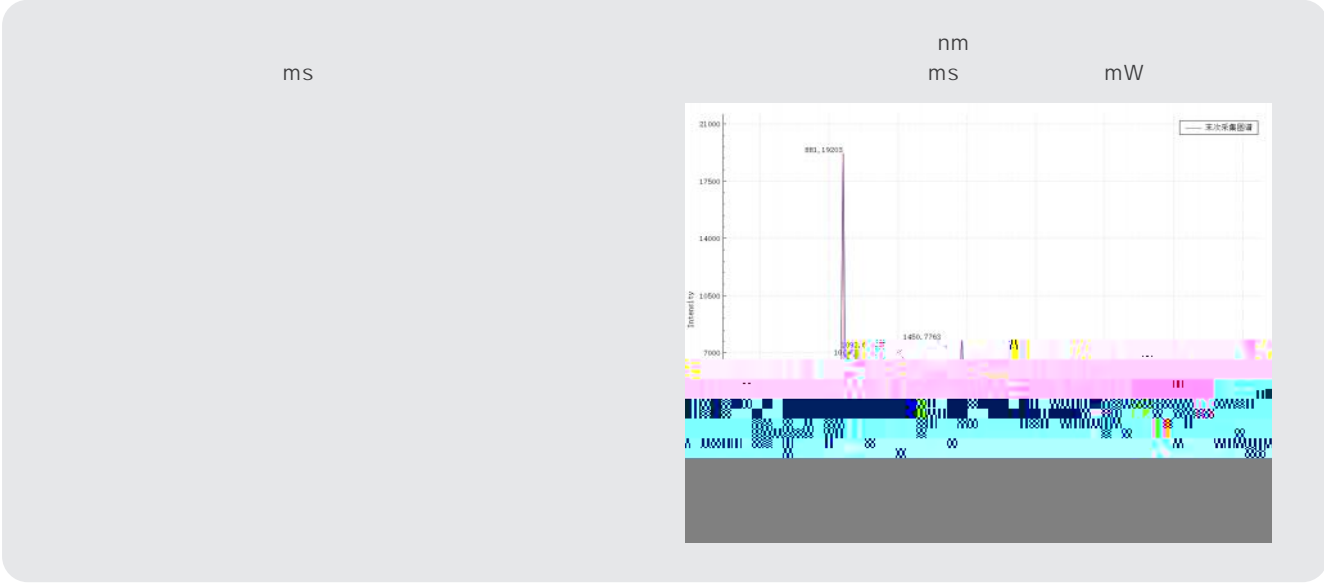
JJF -

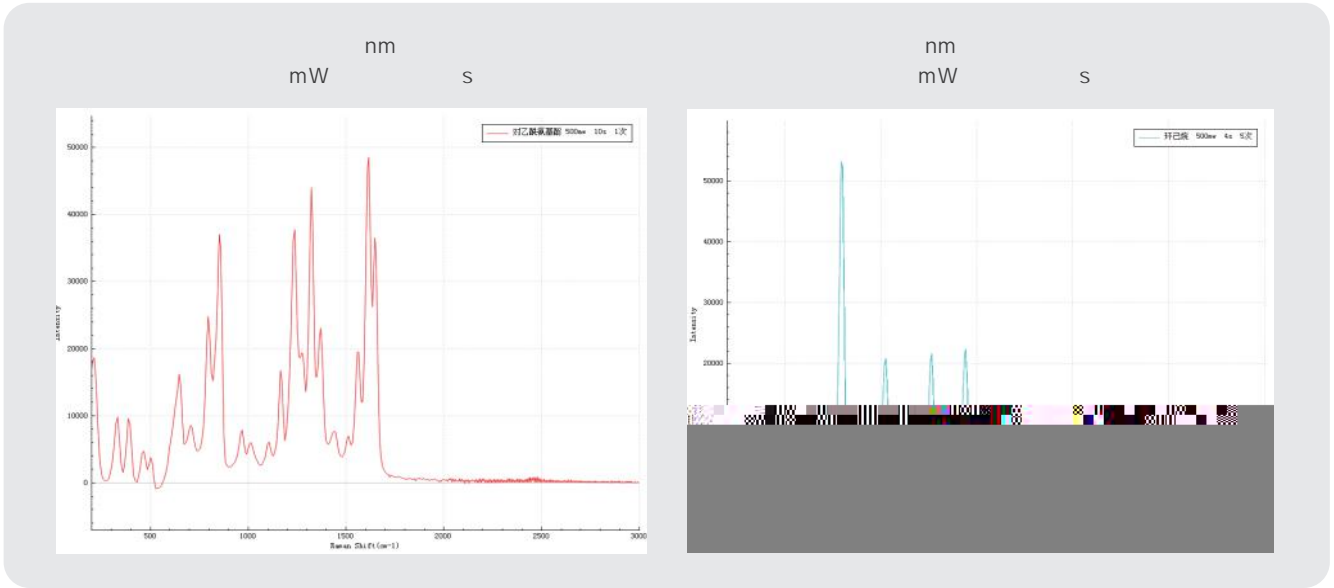
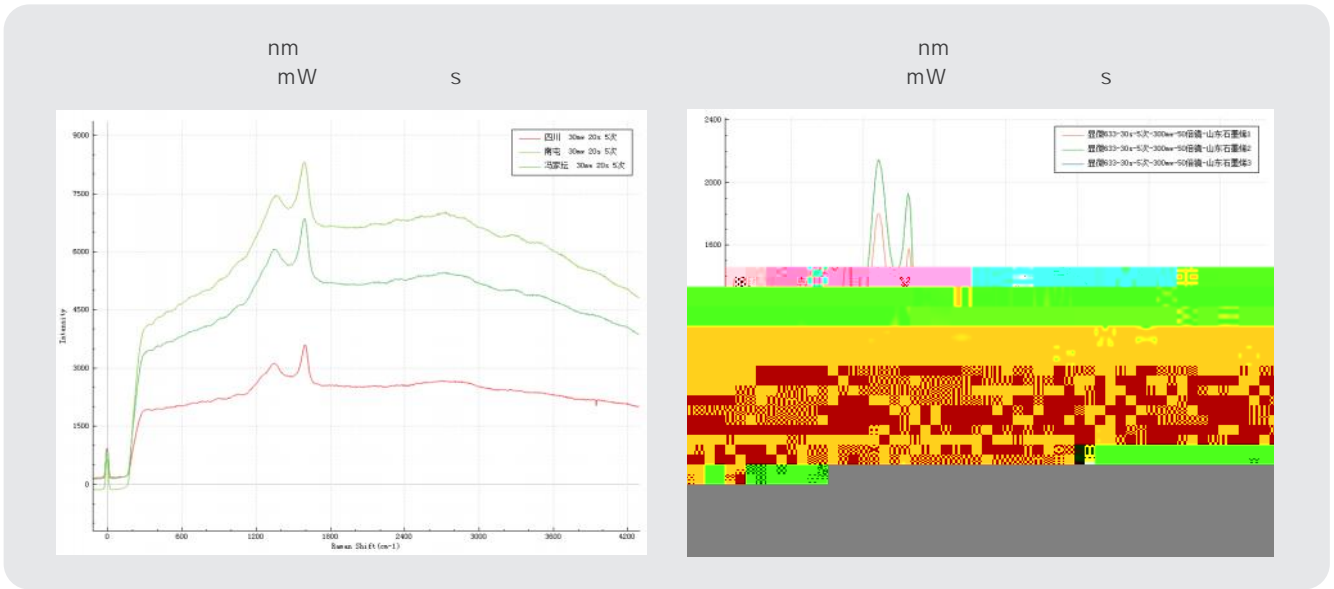
c

FC/PC
 . m
 SUS . mm

SMA



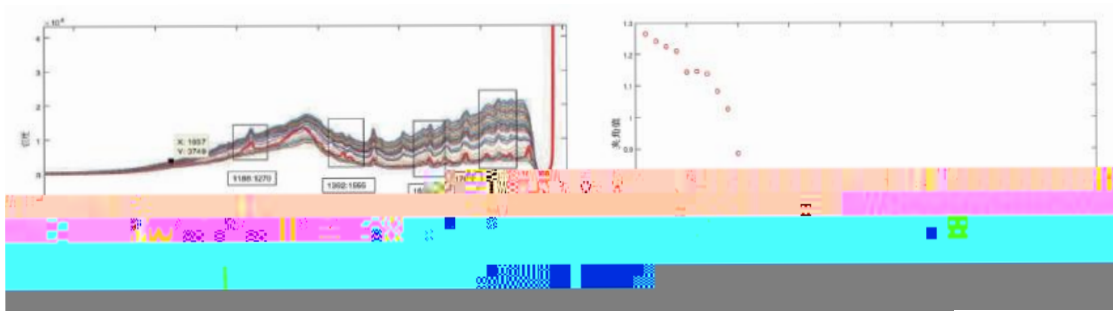
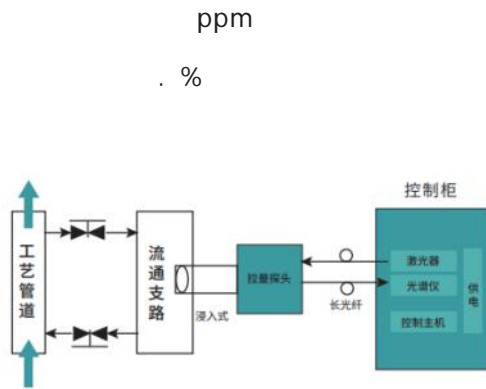




Pad

mm

在线拉曼光谱分析技术



CaCO_3

CaCO

Ca(OH)

cm^{-1}

cm^{-1}

IRS1000箱体式拉曼食品快检仪



cm⁻¹ cm⁻¹
cm⁻¹



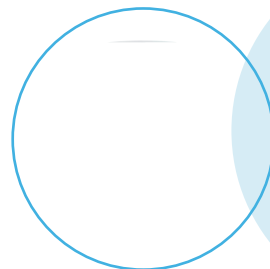
	IRS
	× × mm
	. kg
	- cm ⁻¹
	~ cm ⁻¹
	< . cm ⁻¹
	± . nm . nm
	V/ A
	K
	USB . /MFi
	Jdx,PDF,JPEG,TXT,CSV,SPC
	>
	-
	- %

纳米粒子



金纳米粒子溶胶

GE-1
: 44-56 nm
: 538nm
: 0.01%
6



银纳米粒子溶胶

SE-1
: 45-55 nm
: 418nm
: 0.01%
6

785nm便携式拉曼光谱仪

SEED

nm

USB

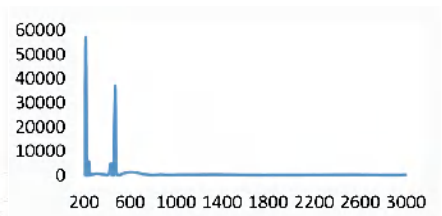
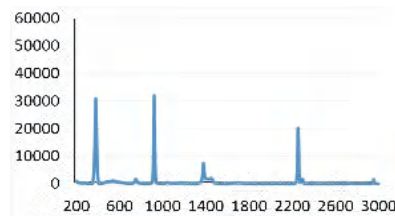


	SEED
	× × mm
	. kg
	Micro USB
	- cm ⁻¹
	~ cm ⁻¹ @ μm
	< cm ⁻¹
	< cm ⁻¹
	± . nm . nm
	, hrs
	V/ A
	- mW
	ms- s
	. mm
	-
	- %

- cm⁻¹

< %P-P@ hrs

cm⁻¹



显微拉曼光谱仪

MR / / /

LED

nm nm nm nm nm

Mapping

μm

mapping



mapping



	MR	MR	MR	MR
拉曼模块				
	- cm^{-1}	- cm^{-1}	- cm^{-1}	- cm^{-1}
	~ cm^{-1} @ μm	~ cm^{-1} @ μm	~ cm^{-1} @ μm	~ cm^{-1} @ μm
	< cm^{-1}			
	< cm^{-1}			
	\pm nm	\pm nm	\pm . nm	\pm . nm
	. nm	. nm	. nm	. nm
	- mW	- mW	- mW	- mW
	ms- min			
	hrs		hrs	

	MR	MR	MR	MR
--	----	----	----	----

显微模块

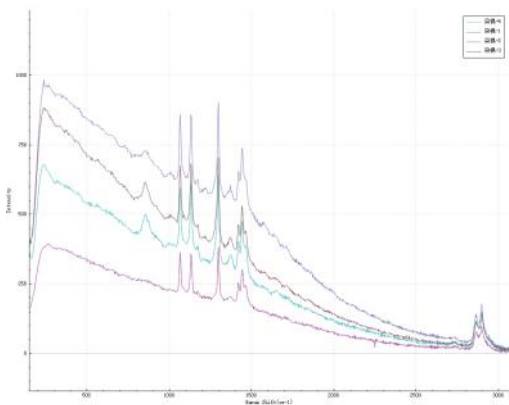
			X X X	X
CCD				
Mapping	mm* mm	< . μm . μm	mm/s / mm	± μm μm
Mapping		mm× mm		mm× mm
		W/ WLED		
			mm	μm

整机参数

		× × mm
		× × mm
		-
		%- %

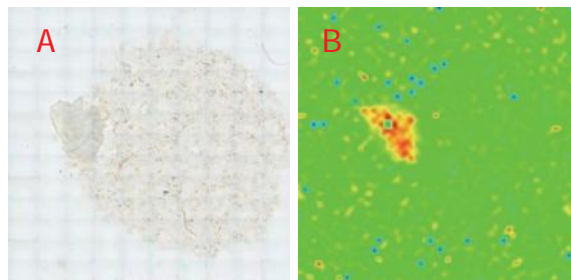


Mapping



mapping

A
cm⁻¹
B mapping



(A).
(B).

LIFS激光诱导荧光光谱仪

LIFS



	LIFS		
	nm	nm	nm
	- nm	- nm	- nm
	hrs	hrs	hrs
	- mW	- mW	- mW
	× × mm		
	V/ A		
	. kg		
	~ nm		
	% P-P(@ hrs)		
	OD		
	. mm		
	-		
	- %		

应用领域

-
-
-
-
-

HRS300手持式光谱仪

HRS

- nm

HRS

SMA

LED

RPB-D -IS



	HRS
	× × mm
	< g
	Micro USB
	- nm
	~ . nm
	ms- s
	SMA
	×
	WIFI/ /GPS
	-
	- %



应用领域	
■	■
■	■
■	■

OFS系列全光谱地物光谱仪

OFS

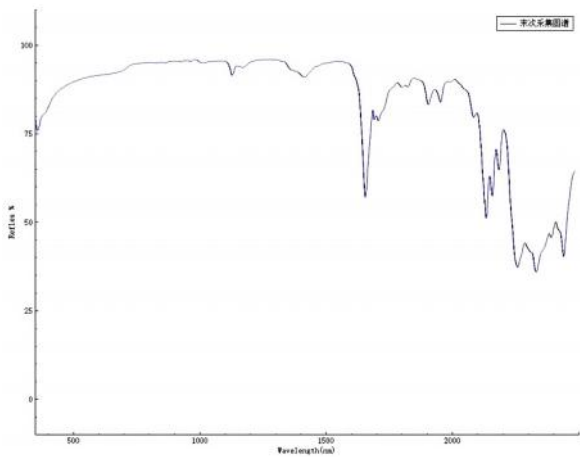


	OFS	OFS	OFS
	- nm	- nm	- nm
	~ . nm@ - nm	~ . nm@ - nm; ~ . nm@ - nm	~ . nm@ - nm; ~ . nm@ - nm
	ms- s	ms- s	ms- s@ - nm μs- ms@ - nm
		x x cm	
		~ . kg	
		. %	
		. nm	
		. nm	
		/USB/wifi/GPS	
		- (-)	
		- - (-)	



nm nm

/



微区光谱系统

- mm





“ ”

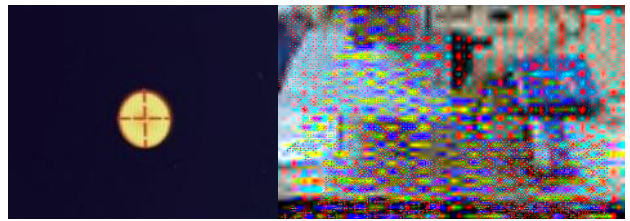
~ nm

+

μm

+ +

应用领域	
■	■
■	■
■	■



光谱模块					
		- nm			
		ms- s			
		hrs		hrs	
显微模块					
			X	X	X
CCD					
		mm×	mm	mm×	mm
		V	W		
				mm	μm
整机参数					
		×	×	mm	× × mm
		-			
		%- %			

FL375荧光光谱仪

FL

/

MEMS

Advanced Glycation End-products

FL

AGEs

AGEs

AF AF

)

AGEs



	FL
LED	nm
LED	nm
	/
	mm
	- nm
	~ nm
	-
	%- %



FL

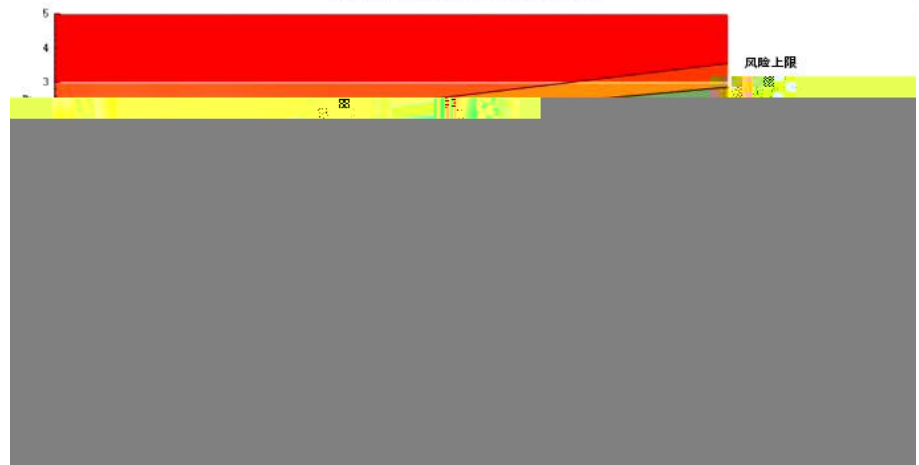
LED nm

AGEs

AGEs

AGEs

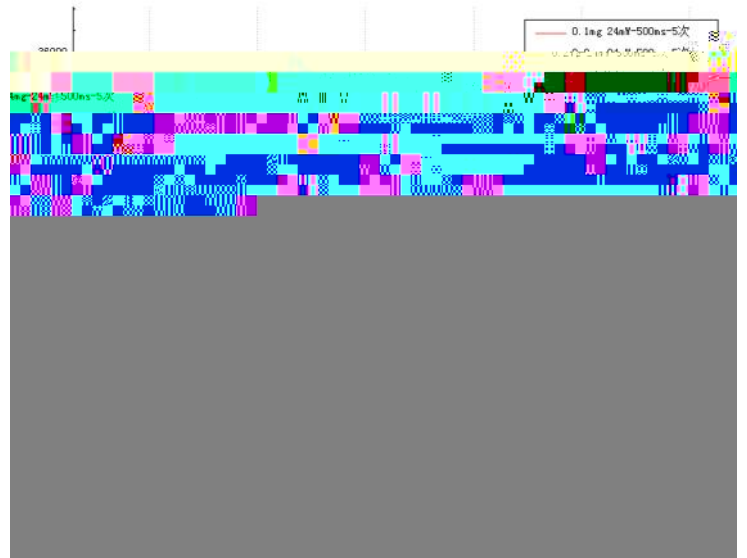
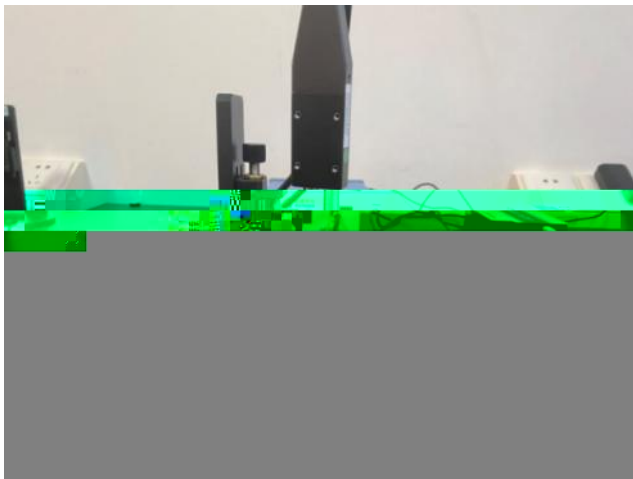
普通人群AGEs随年龄变化趋势图



光纤光谱应用之激光诱导荧光

B

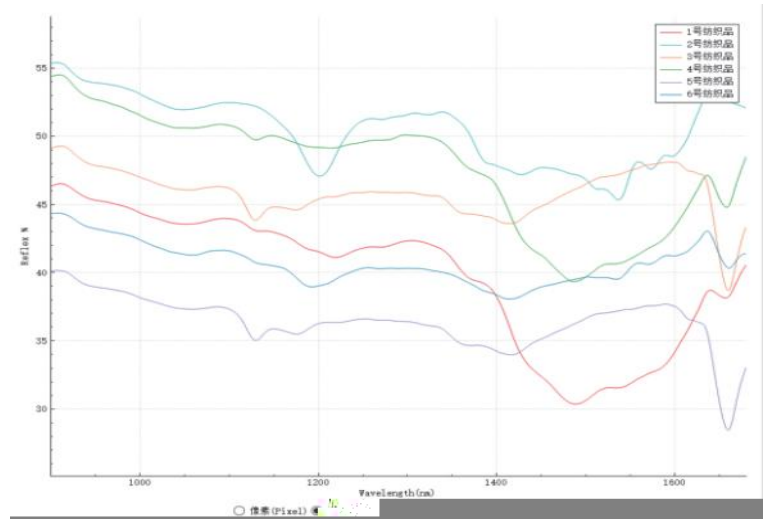
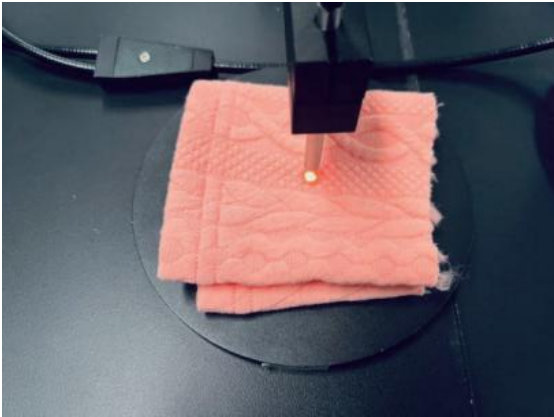
	XS
	nm
	nm
	UspectralPlus
	QP - -VIS-NIR-SS



光纤光谱应用之反射光谱测量

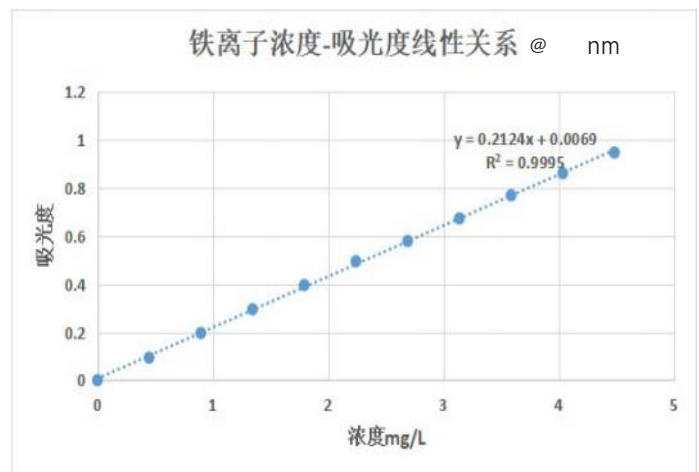
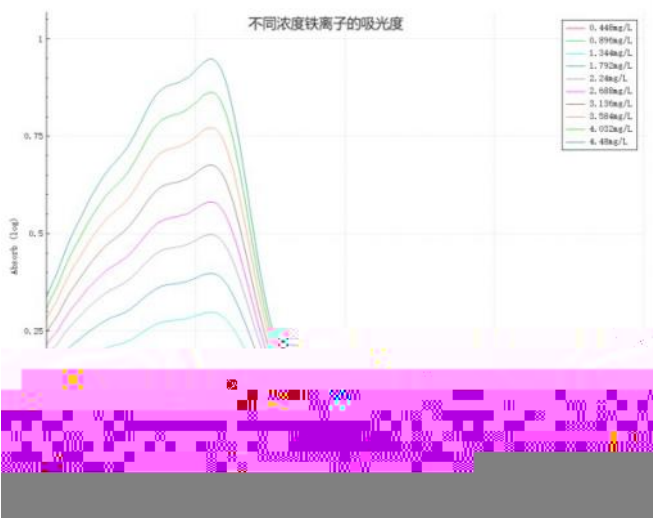
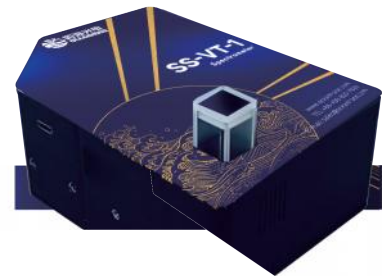
	NIRpro
	UspectralPlus
	HL -XL
	QR * -VIS-NIR-





光纤光谱应用之紫外-可见吸收

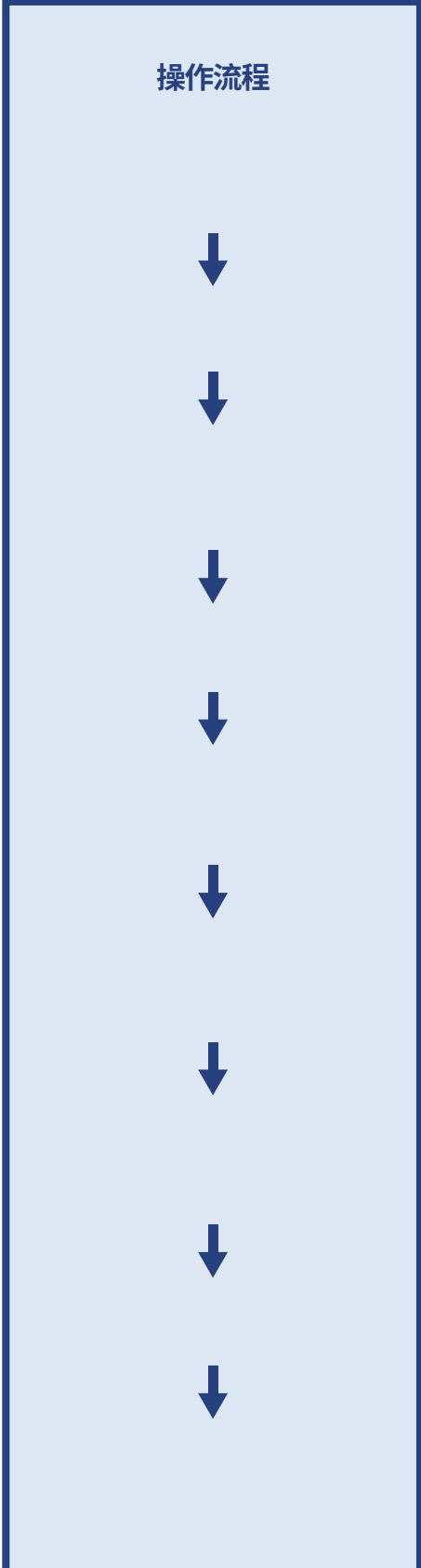
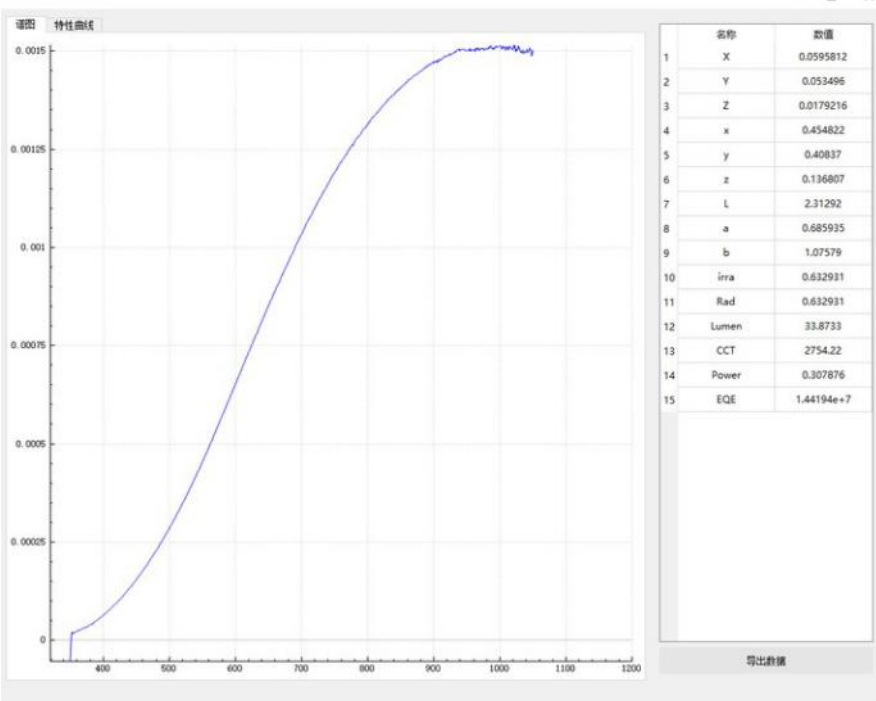
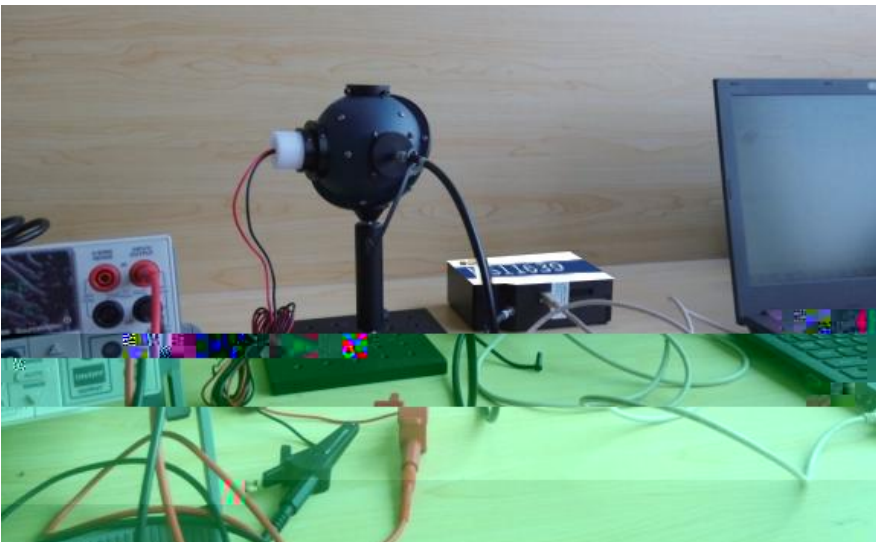
	SS-VT-
	UspectralPlus



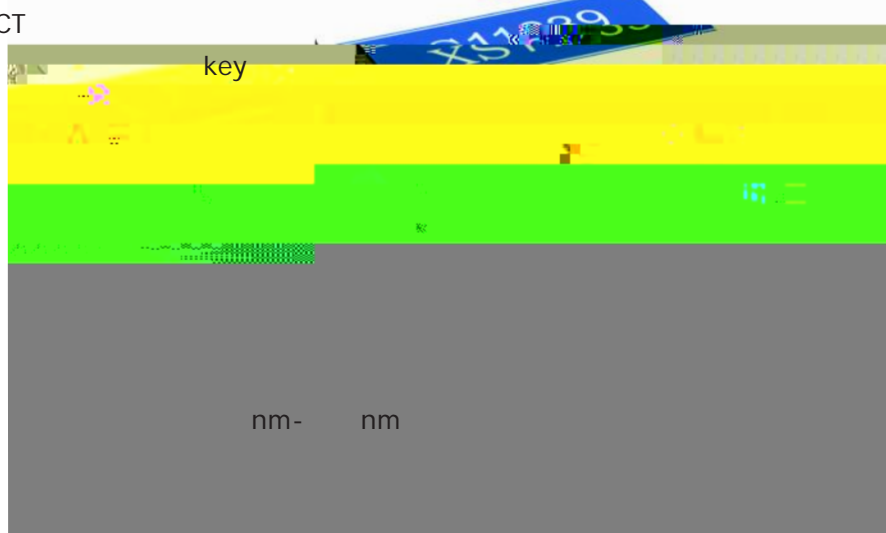
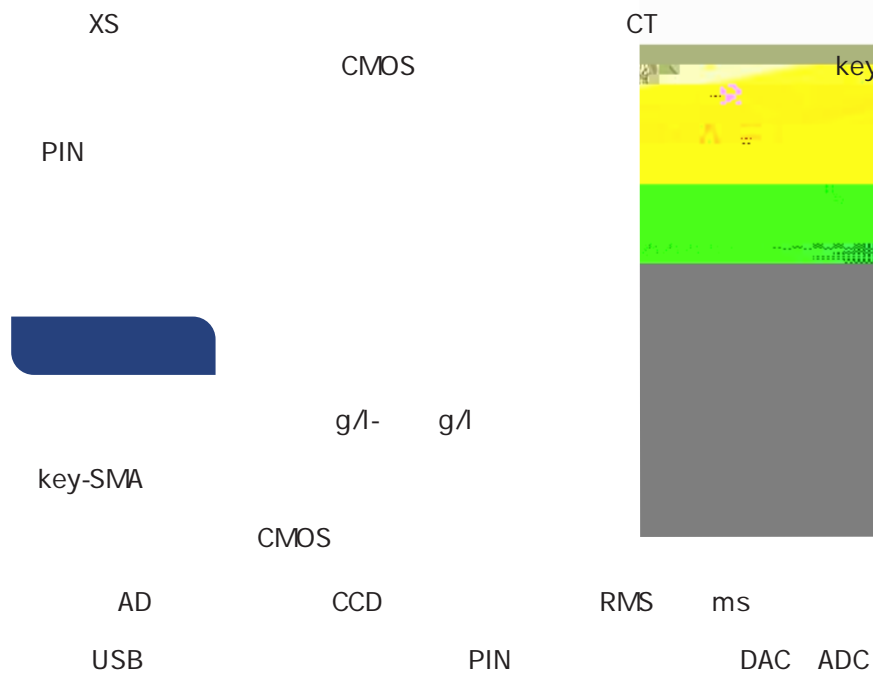
光纤光谱应用之辐照度测量

LED

	HS /HS
	UspectralPlus
	QP
	LED



XS11639 高灵敏度光纤光谱仪



CCD	
CCD	
	%
	g
	mm× . mm× mm
	~
	%- %

ms CCD
 CCD ms /CCD

			nm		frame/s					
			pixels	g/l				μm	μm	μm
XS	-	X	-	-	-	-	.	-	-	-
XS	-	X	-	-	-	.	.			
XS	-	X	-	-	-		.			
XS	-	X	-	-	-		.			
XS	-	X	-	-	-	.	.	.		
XS	-	X	-	-	-		.	.		
XS	-	X	-	-	-		.			

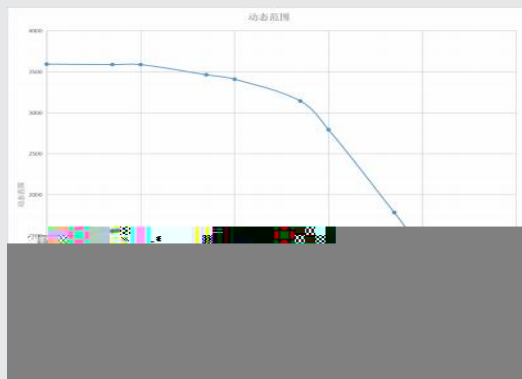
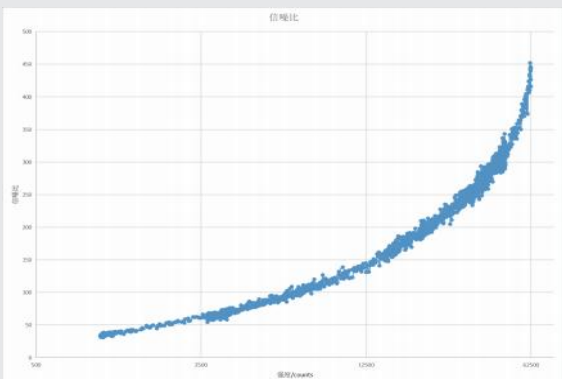
ms

VS

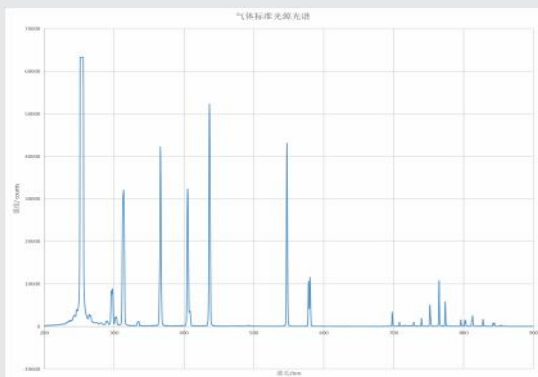


&

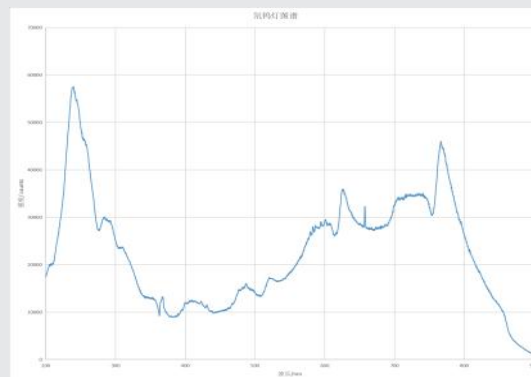
ms



- nm



- nm



HS2048 高分辨光纤光谱仪

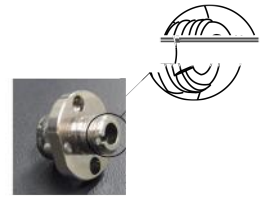
HS CT . nm ~ . %
 ~ . pixel/



CT

~ . %

. nm
 g/l- g/l
 ~ . pixel/



key-SMA

key-SMA

CMOS

AD

CCD

RMS

ms

USB

PIN

DAC

ADC



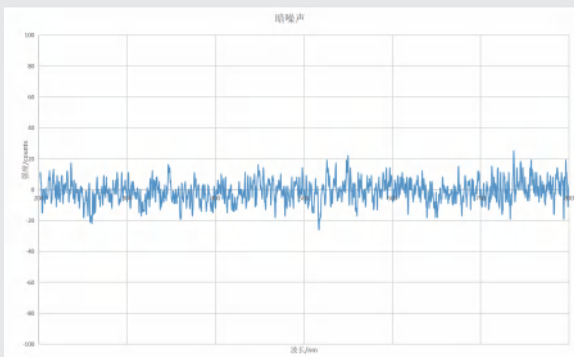
		Key-SMA					
		μm	μm	μm	μm	μm	μm
		g/l	g/l	g/l	g/l	g/l	g/l
		CMOS					
		~ . %					
		~ . pixel/					
AD		bit					
		USB . RS					
		PIN					

	μs- s
	ns
CCD	
CCD	:
	%
	g
	* * mm
	~
	%- %

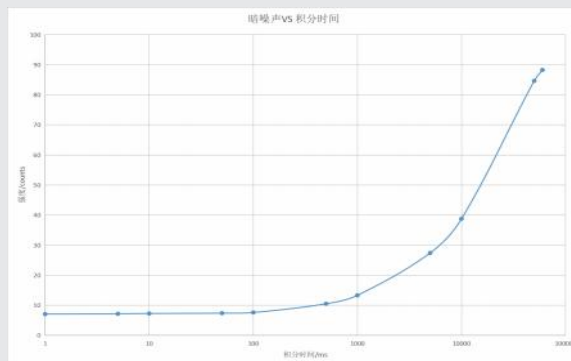
ms CCD
 CCD ms /CCD

			nm		frame/s	μm	μm	μm	μm	μm
			pixels	g/l						
HS - M - -					-	-	.	-	-	-
HS - M - -					-	-	.	-	-	-
HS - M - -					-	-	.	-	-	-
HS - M - -					-	-	.	-	-	-
HS - M - -					-	.	-	-	-	-
HS - M - -					-	.	-	-	-	-
HS - M - -					-	.	.	.	-	-
HS - M - -					-	.	.	-	-	-
HS - M H- -						-	.	-	-	-

ms

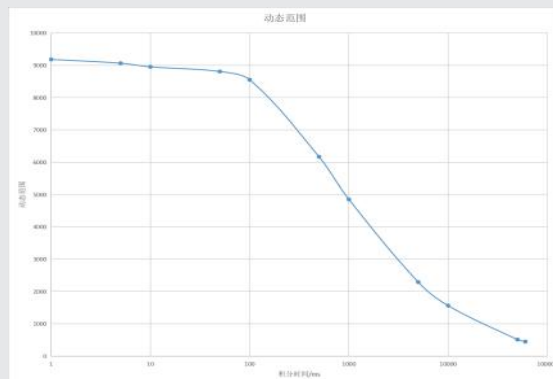
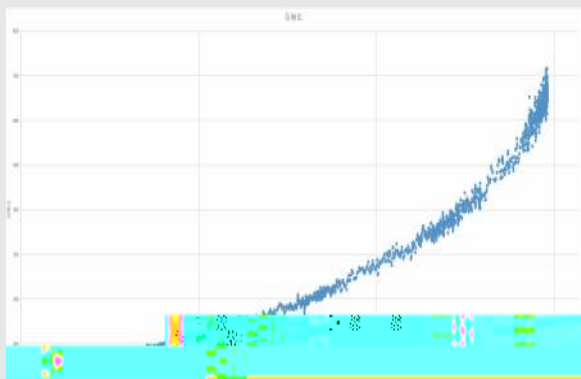


VS

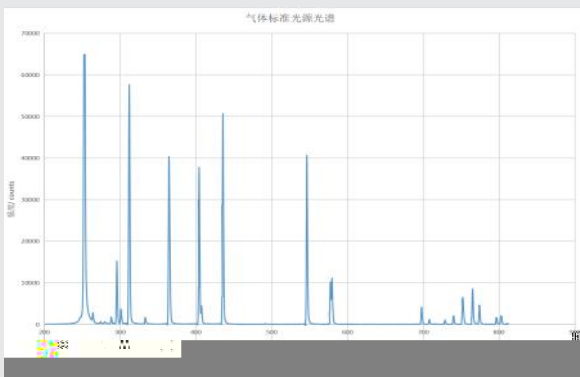


&

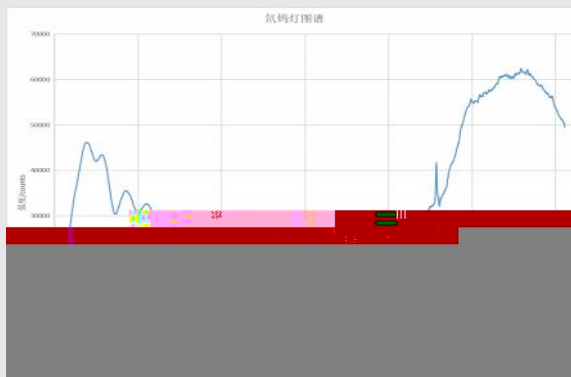
ms



- nm



- nm



HS4096 高分辨光纤光谱仪

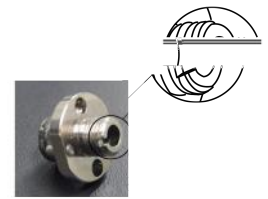


HS CT
 ~ . pixel/ nm ~ . %
 CMOS



CT ~ . %

. nm
 g/l- g/l
 < . pixel/



key-SMA

key-SMA

AD CCD RMS ms
 USB PIN DAC ADC



		Key-SMA					
		μm	μm	μm	μm	μm	μm
		g/l	g/l	g/l	g/l	g/l	g/l
		CMOS					
		~ . %					
		~ . pixel/					
AD		bit					
		USB . RS					
		PIN					

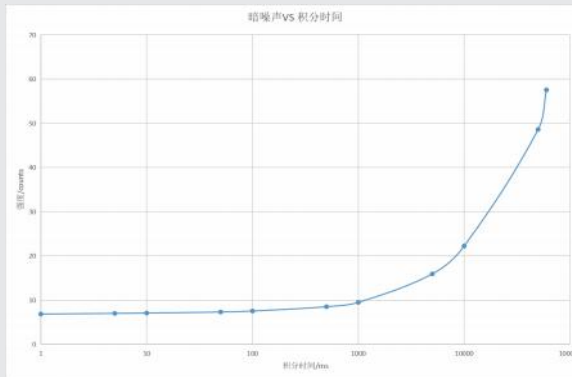
	μs - s
CCD	
CCD	
	%
	g
	* * mm
	~
	%- %

ms CCD
 CCD ms /CCD

				nm							
				pixels	g/l	frame/s	μm	μm	μm	μm	μm
HS	-	M	- -			-	-	.	-	-	-
HS	-	M	- -			-	-	.	-	-	-

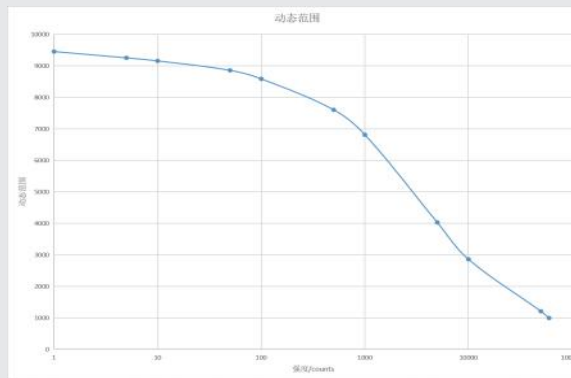
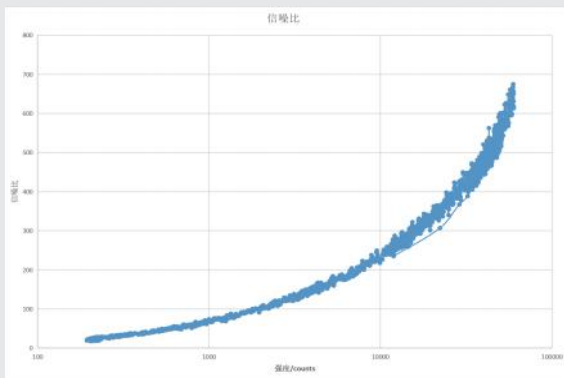
ms

VS

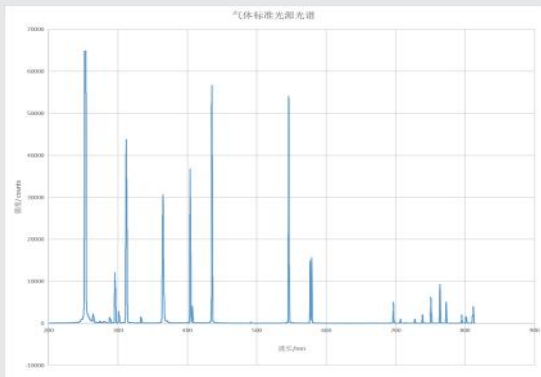


&

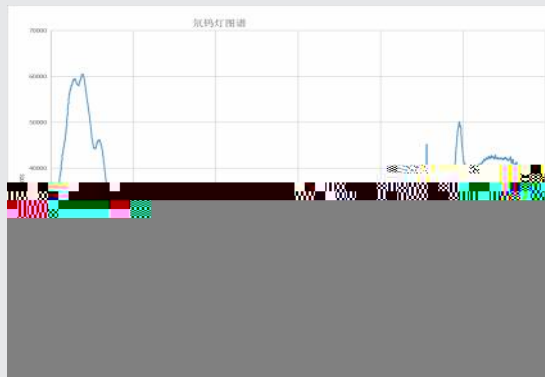
ms



- nm



- nm



MS2000 宽光谱光纤光谱仪

MS

CT

. nm ~ . %



~ . %

CT

. nm

g/l- g/l

~ . pixel/

key-SMA

CMOS

AD

CCD

RMS

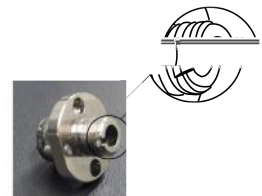
ms

USB

PIN

DAC

ADC



key-SMA

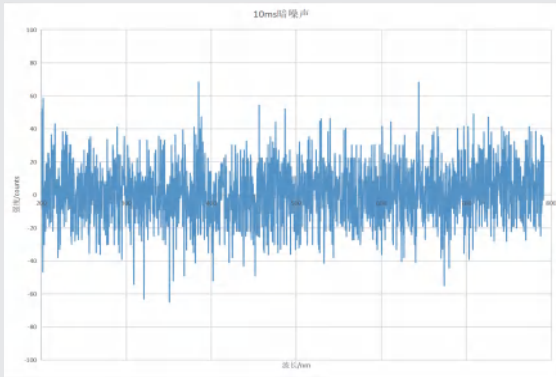
		Key-SMA						
		μm	μm	μm	μm	μm	μm	μm
		g/l	g/l	g/l	g/l	g/l	g/l	g/l
		CMOS						
		~ . %						
		~ . pixel/						

AD	bit
	USB . RS
	PIN
	μs- S
CCD	
CCD	
	%
	g
	mm × mm × mm
	~
	%- %

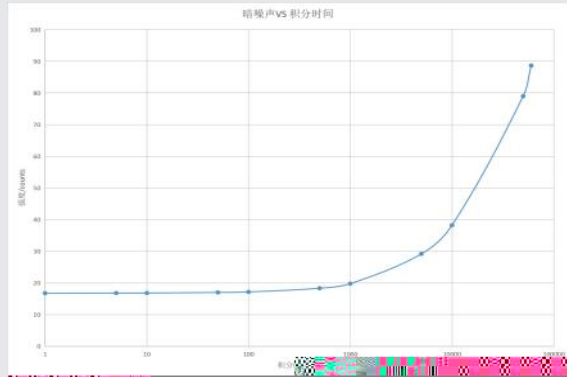
ms CCD
 CCD ms /CCD

	pixels	g/l	nm		frame/s	μm	μm	μm	μm	μm
MS - M - -					-	.	.	.	-	-

ms

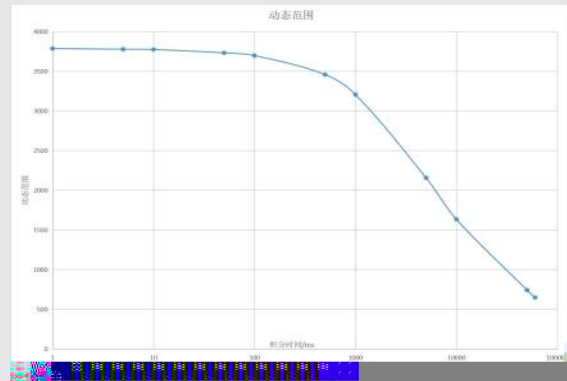
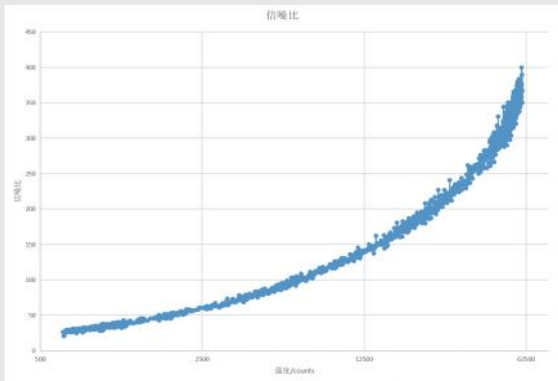


VS

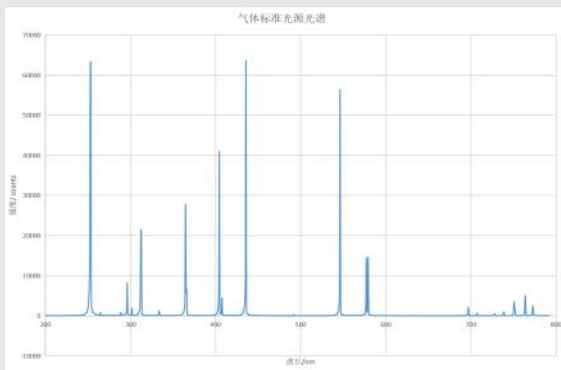


&

ms



- nm



- nm

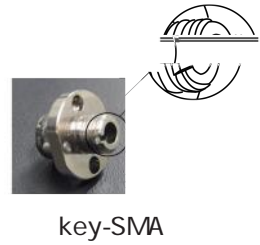


Area 背照式高灵敏光纤光谱仪

Area CT
 . nm ~ . % nm
 CCD



CT
 key-SMA g/l- g/l
 CCD
 AD CCD RMS ms
 USB PIN DAC ADC



Key-SMA							
	μm	μm	μm	μm	μm	μm	
	g/l	g/l	g/l	g/l	g/l	g/l	g/l
Back-thinned CCD							
	× pixels						
	~ . %						

AD	bit
	USB . RS
	PIN
	ms- s
CCD	
CCD	
	%
	. kg
	mm× mm× mm
	~
	%- %

ms CCD

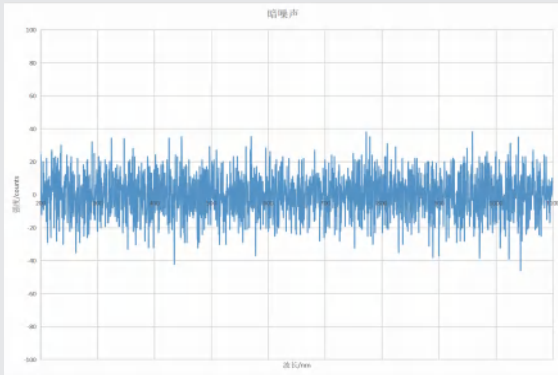
CCD

ms

/CCD

				nm		frame/s	μm	μm	μm	μm	μm
				pixels	g/l						
Area-	X	-	-			-	-	.	-	-	-
Area-	X	-	-			-	-	.	-	-	-
Area-	X	-	-			-	-	.	-	-	-
Area-	X	-	-			-	-	.	-	-	-

ms

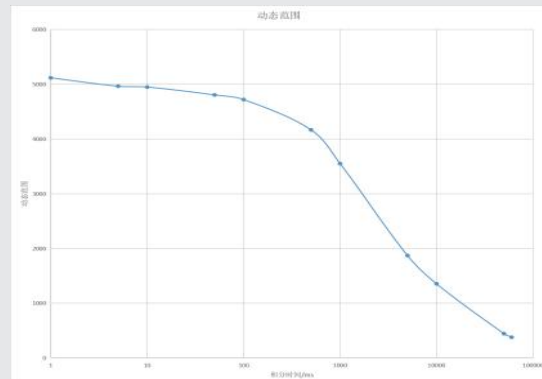
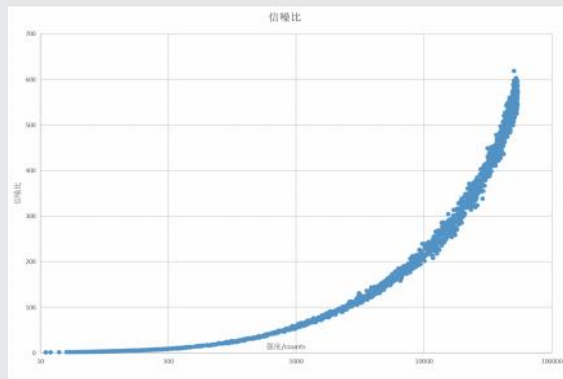


VS

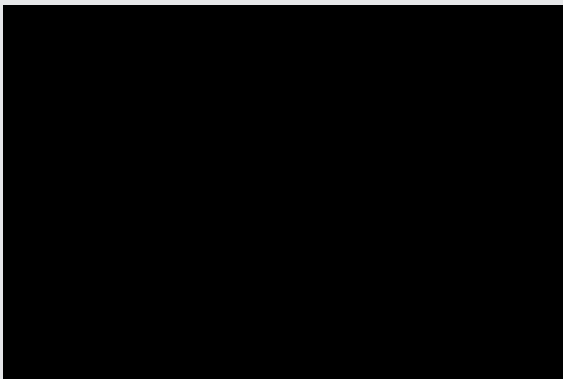


&

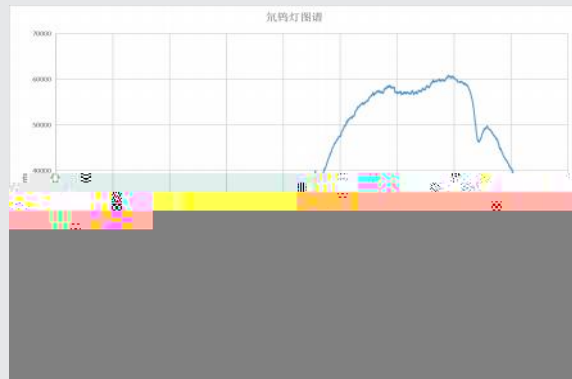
ms



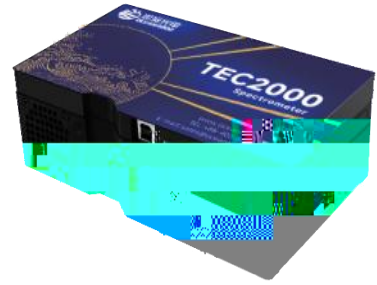
- nm



- nm



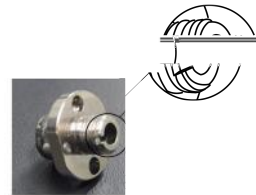
TEC2000 制冷型光纤光谱仪



TEC CT
 ~ . % CCD . nm



CT
 . nm
 g/l- g/l
 CCD
 key-SMA
 CCD
 AD RMS ms
 USB PIN DAC ADC



key-SMA



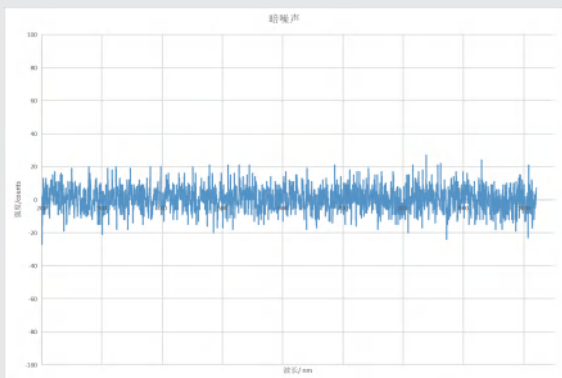
	Key-SMA							
	μm	μm	μm	μm	μm	μm		
	g/l	g/l	g/l	g/l	g/l	g/l	g/l	g/l
	CCD							
	~ . %							

AD	bit
	USB . RS
	PIN
	ms- s Max
CCD	
	:
	%
	. kg
	mm× mm× mm
	~
	%- %

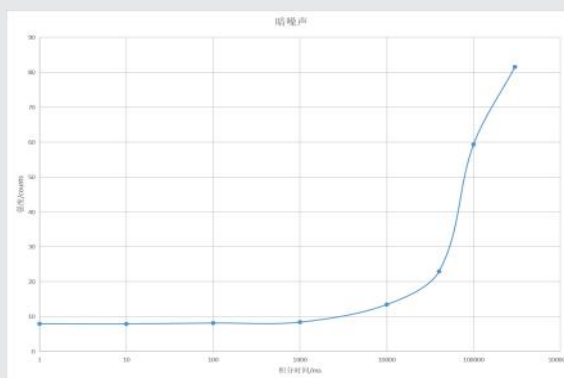
ms CCD
 CCD ms /CCD

				nm		frame/s	μm	μm	μm	μm	μm
				pixels	g/l						
TEC	-	X	-	-	-	-	-	.	-	-	-
TEC	-	X	-	-	-	-	-	.	-	-	-
TEC	-	X	-	-	-	-	-	.	-	-	-
TEC	T-	X	-	-	-	-	-	.	-	-	-
TEC	-	X	-	-	-	-	-	.	-	-	-
TEC	-	X	-	-	-	-	-	.	-	-	-

ms

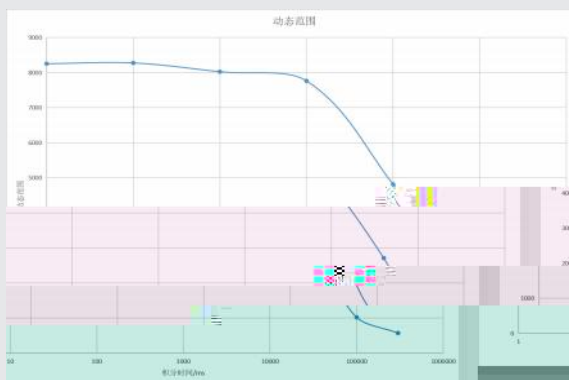
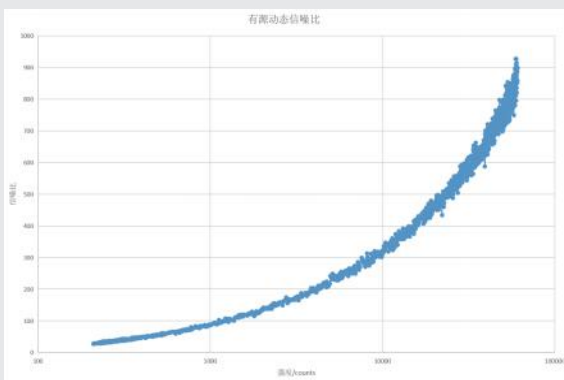


VS

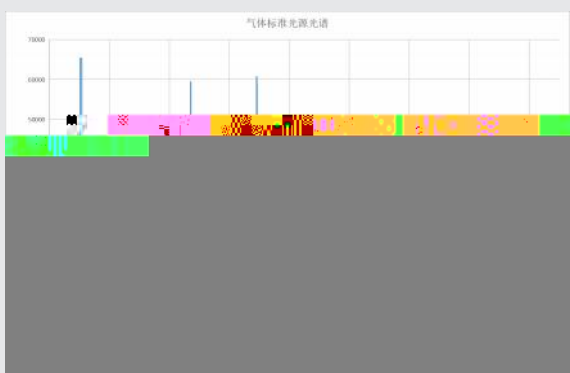


&

ms



- nm



- nm



DQPro深制冷型光纤光谱仪

DQPro CT . nm ~ . %
CCD



CT

~ . nm

g/l- g/l

CCD

key-SMA

CCD

AD

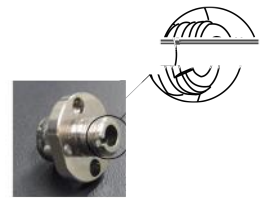
CCD

RMS ms

USB

PIN

DAC ADC



key-SMA



	Key-SMA							
	μm	μm	μm	μm	μm	μm		
	g/l	g/l	g/l	g/l	g/l	g/l	g/l	g/l
	CCD							
	× pixels							
	~ . %							

AD				bit											
				USB . RS											
				PIN											
				ms- min											
CCD															
CCD															

ms CCD

CCD

CCD

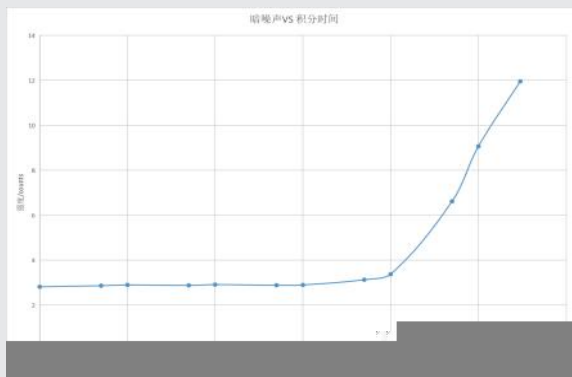
ms

/CCD

						nm							
		pixels		g/l			frame/s	µm	µm	µm	µm	µm	
DQPro-	X - -	x	-				-	.	.	.	-	-	
DQPro-	X - -	x	-							.			
DQPro-	X - -	x	-							-	.		
DQPro-	X - -	x	-						.	-			
DQPro-	X - -	x	-						.	-			
DQPro-	X - -	x	-						.	-			
DQPro-	X - -	x	-				-	-		-	-	-	
DQPro-	X - -	x	-				-	-		-	.	-	
DQPro-	X - -	x	-				-	-	.	-	-	-	
DQPro-	X - -	x	-				-	-		-	-	-	

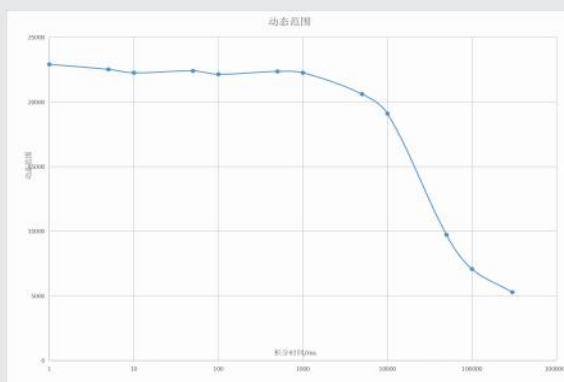
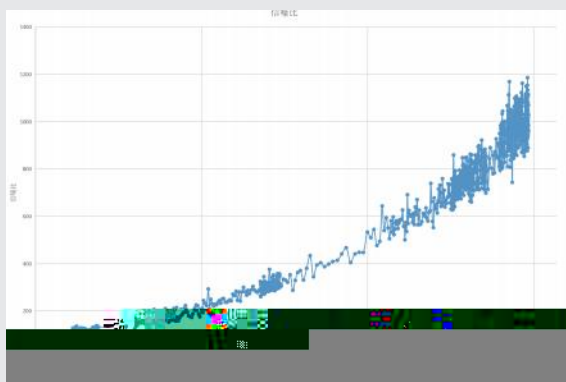
ms

VS

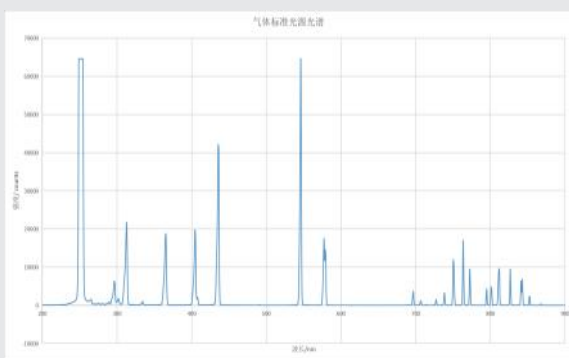


&

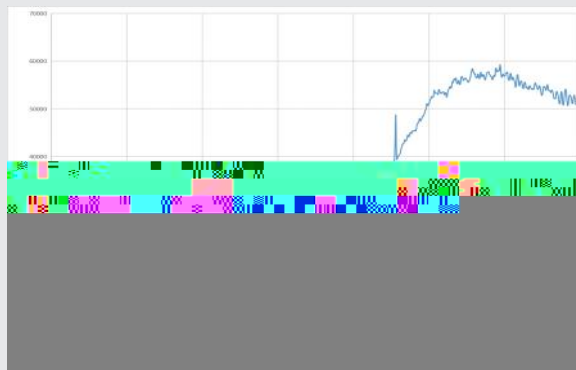
ms



- nm



- nm

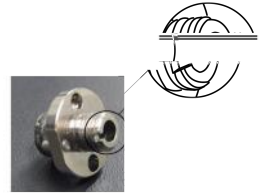


MS13913 近红外光纤光谱仪

MS CT . nm ~ %



CT



key-SMA

key-SMA

USB

PIN

DAC ADC

InGaAs

- nm



	Key-SMA
	μm μm μm μm μm μm
	g/l
	InGaAs
	< %
AD	bit
	USB . RS
	PIN
	μs - S
CCD	
	%

	g	
	mm×	mm× mm
	~	
	% - %	

ms CCD

	pixels	g/l	nm		frame/s	μm	μm	μm	μm	μm
NIR - M - -		-			-	-	.	-	-	-

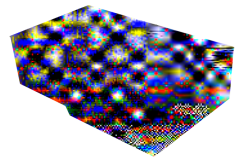
NIRPro 制冷型近红外光纤光谱仪

NIRPro

CT

. nm

~ . %



A- x

B- x

InGaAs
nm- nm - nm - nm

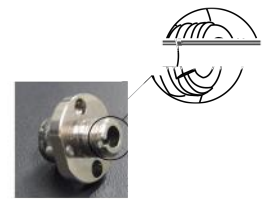


. nm

g/l- g/l

CCD

-



key-SMA

key-SMA

InGaAs CCD

AD

CCD

RMS

ms

USB

PIN

DAC ADC

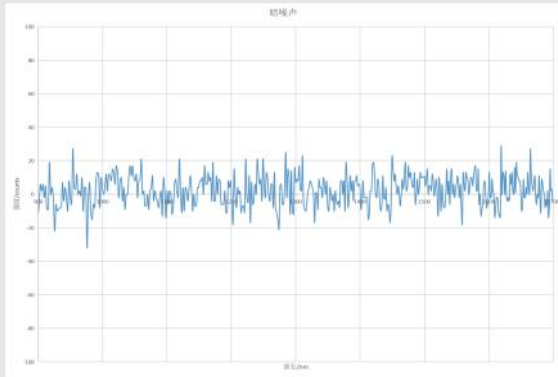


	A- x : x x mm	B- x : x x . mm	
	A- x : . kg	B- x : . kg	
	μm μm μm μm μm μm		
	g/l g/l g/l g/l g/l g/l g/l g/l		
	InGaAs		
	~ . %		
AD	bit		
	USB . RS		
	PIN		
	us- Min - nm	us- Min - nm	
CCD			
	:		
CCD	: (- nm	: (- nm	: (- nm
*			
*	:		
	%		
	~		
	% - %		

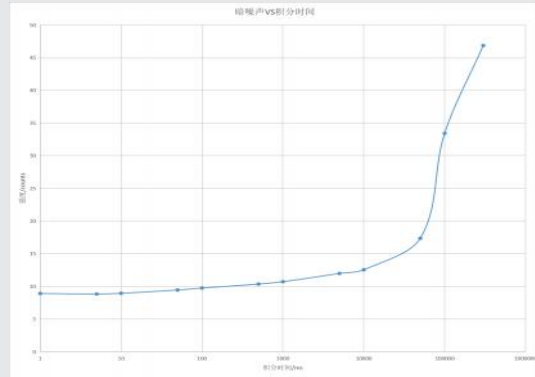
ms CCD
 CCD ms /CCD
 CCD CCD
 CCD

	pixels	g/l	nm		frame/s	μm					
NIRPRO- X - -	-				-	-	.				
NIRPRO- X - -	-				-	-	.	-	-	-	-
NIRPRO- X - -	-				-	.	.	-	-	-	-
NIRPRO- X - -	-				-	-	.	-	-	-	-
NIRPRO- X - -	-					-	.	.	-	-	-
NIRPRO- X - -	-				-	.	.	-	-	-	-

ms

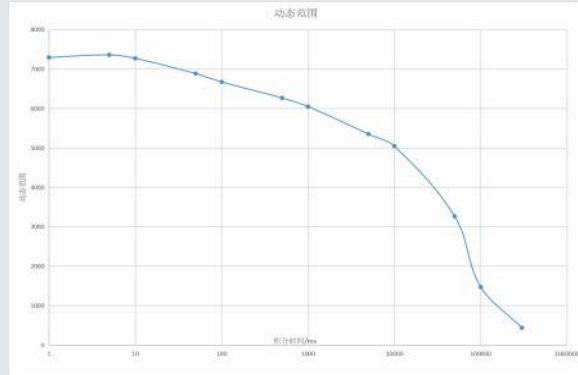
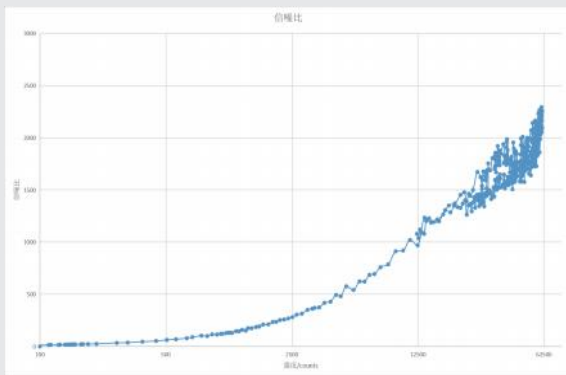


VS

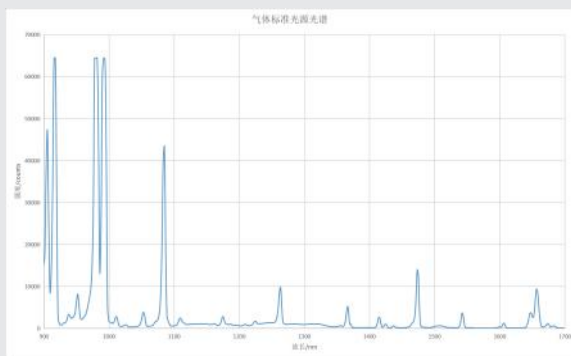


&

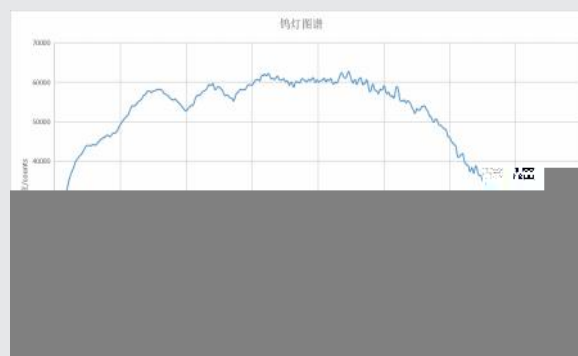
ms



- nm



- nm



拉曼激光器

nm nm nm nm nm



	/ / / / nm	/ / nm		nm
	x x mm	x x mm	x x mm	x x mm
	g	g	g	g
			/	
	---	USB /RS		PIN
	V/ A			V/ A



< % P-P (hrs)

± . nm

< . nm/°C



hrs; P-P %

" OHLaser"

± . nm; . nm

荧光激光器

nm nm nm



	nm	nm nm nm	nm
	x x mm	x x mm	x x mm
	g	. kg	g
	OEM		
	FC	FC/SMA	
		V/ A	
		~	
		~ %	

RPB系列常规拉曼探头

RPB nm nm nm nm nm nm



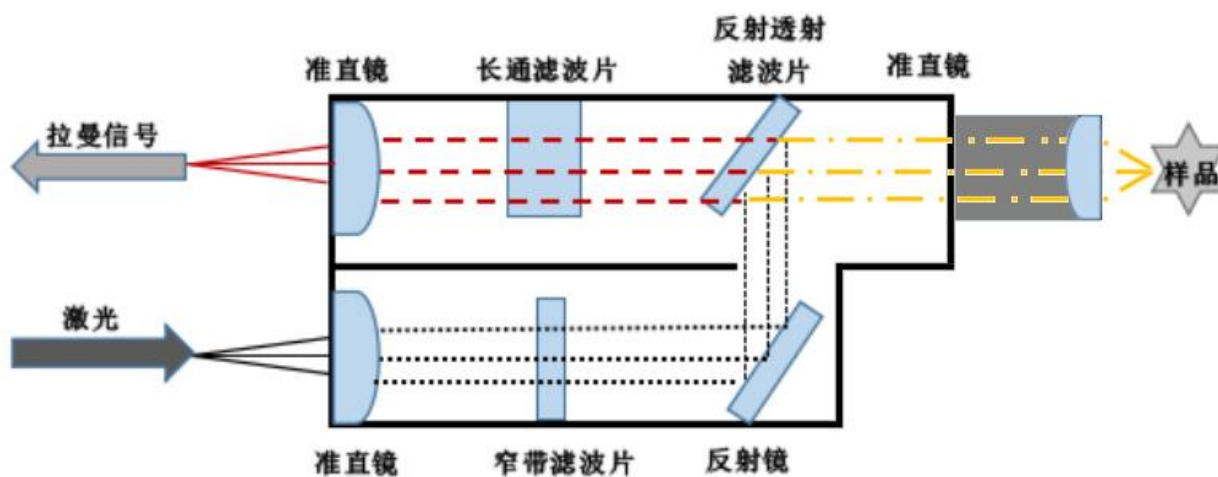
FC/SMA SMA

. m

SUS . mm



	(nm)	(cm ⁻¹)	mm	
RPB- . . -FS		-	.	- °C~ °C
RPB- . . -FS		-	.	- °C~ °C
RPB- . . -FS		-	.	- °C~ °C
RPB- . . -FS		-	.	- °C~ °C
RPB- . . -FS		-	.	- °C~ °C
RPB- . . -FS		-	.	- °C~ °C



N



	(nm)	(nm)	mm	
FPB - . -FS		-	.	- °C~ °C
FPB - . -SS		-	.	- -
FPB - . -FS		-	.	- °C~ °C

光纤系列

QP

QR

BIF

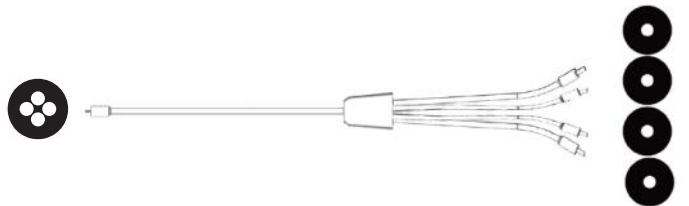
>>QP高品质多模光纤



>>QR反射光纤



>>BIF分束光纤



Y

* *

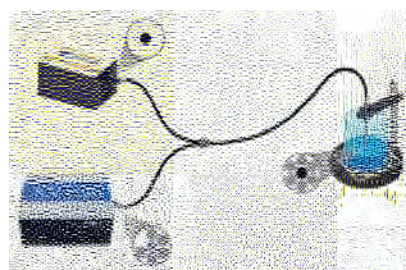
N N

" "

反射多模光纤QR系列

QR

QR



SMA



	QR ×	QR ×	QR ×
	μm×	μm×	μm×
	. m/ m/		
	UV-VIS VIS-NIR		
	. / .		

HL10000-Mini卤钨灯

HL -Mini

VIS-NIR (- nm)



W

. %RMS

SMA

	* * mm
	. kg
	. w
	hrs
	K
	- nm
	. % . w

HL2000-P20 高功率连续卤钨灯

HL -P

VIS-NIR(- nm) W



W

LPW

. % RMS

SMA

	HL -P
	x x mm
	g
	. w
	hrs
	K
	- nm
	. % RMS
	min
	. % /
	SMA
	V/ A
	-
	-

DH2000-Mini 氙钨光纤灯

DH -Mini

-

- nm

SMA

Shutter

	DH -Mini
	. W
	. W

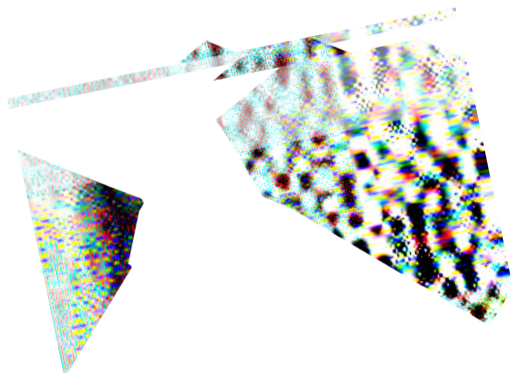


	DH	-Mini
	× ×	mm
		min
		min
		g
	-	nm
	-	nm
	.	W
	.	W
	.	%/h
	hrs	hrs
	< .	s
		TTL
		SMA
	. @	. @
		V/ A

TTL - nm

CAL-Hg汞氙灯校准光源

CAL-Hg



	CAL-Hg
	. x x mm
	g
	hrs
	- nm
	SMA
	min
	V/ A
	~
	~ %

LED4007-OH桌面式LED光源

LED -OH LED - % mW LED
 - nm Micro USB RS

	LED -OH
	SMA
	W
	VAC
	× × mm
	. Kg
	nm
	mW



LED hrs
 USB
 - nm
 RS

PRB-D0-IS30反射地物探头

PRB-D -IS

PRB-D -IS



- nm

%- %

hrs

	x x . mm
	g
	mm
	mm
MAH	

SH-RAM-ADJ可微调液体支架



	SH-RAM-ADJ
	× × mm
	RPB/FPB
	. × . × mm
	mm mm

SH-721C液体测量支架

SH- C . × . × mm



	SH- C
	× × mm
	× . × . mm

SH-L-EN 拉曼增强附件

SH-L-EN mm ml % RPB



GER-Tube小视场角镜头

SMA GER-Tube GAR" PB

CUV-10-4WAY四通比色皿支架

CUV- - -WAY

/

. mm

SMA

mm

	CUV- - WAY
	mm× mm× mm
	SMA
	mm
	COL-UV- (nm- μm)
	mm
	mm()
	. mm* . mm* mm
	/



f/

UV

nm

SMA

mm

nm- μm

VOA-6-SMA可调光衰器

VOA- -SMA

SMA



	VOA- -SMA
	× × mm
	. kg
%	-
	SMA
	-
	-

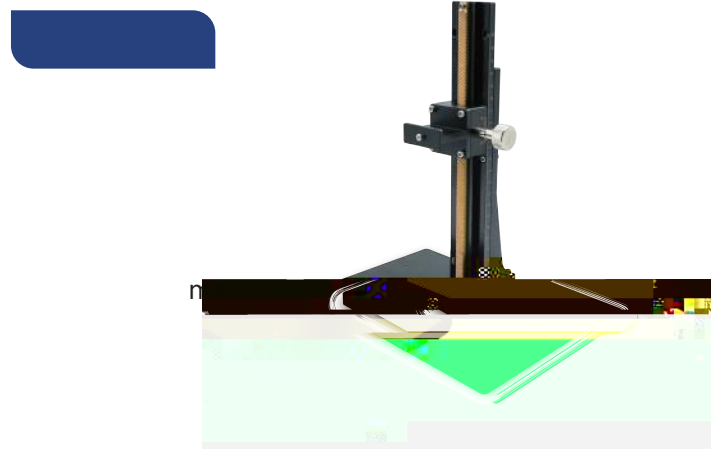
SH-RAM-D20可微调固体拉曼探头测量支架

SH-RAM-D Z mm . mm

SH-RAM-D *
mm mm

M x .

SH-RAM-D	
	x mm
	mm
	mm
	g
	Oceanhood RPB /FPB



SA-Stage-RT透反射测量支架

SA-Stage-RT
SA-Stage-RT



SA-Stage-RT	
	mm
	mm
	mm
	~ mm
	~ nm

COL准直镜系列

COL-UV- mm . mm (nm COL -UV-) ° () / - UNF COL -UV- mm mm - nm COL -UV- °

	COL-UV-	COL -UV-
	. mm	. mm
	mm	mm
	mm	
	- nm	
	° @ μm, N.A= .	
	SMA , UNS / "()	
		> % (- nm)
	UNF / "- UNF / "-	
	- to (-HT)	



COL-UV-



COL -UV-



mm

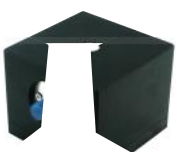
SMA

积分球IS系列

. mm
~ nm
SMA

PTFE
mm mm mm

SMA
M , mm



IS-INT



IS-INT



IS-SBL



IS-SBL

	IS
	%
	mm mm mm
	PTFE
	~ nm
	SMA

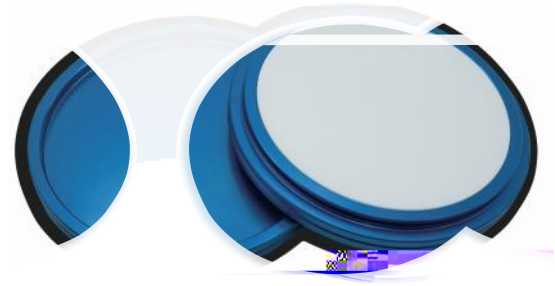
漫反射标准板

WR

PTFE



%



	WR-D -	WR-D -	WR-D - -STD	WR-D - -STD
	mm	mm	mm	mm
	mm	mm	mm	mm
	mm	mm	mm	mm
	~ nm			
	%@ ~ nm	%@ ~ nm	%@ ~ nm	

光纤耦合器

SMA

SMA-SMA-CC

/ - UNF- A

FC-FC-CC

M X .

. mm . mm

. mm . mm



FC-FC-CC



SMA-SMA-CC

比色皿

CVT-

CVT-



CVT-



CVT-



